



Guide

DataMatch Enterprise Server + API Export Results From Existing Project GUI



68 Bridge, St. Suite 307
Suffield, CT 06708



+1 888-779-6578



Sales@DataLadder.com

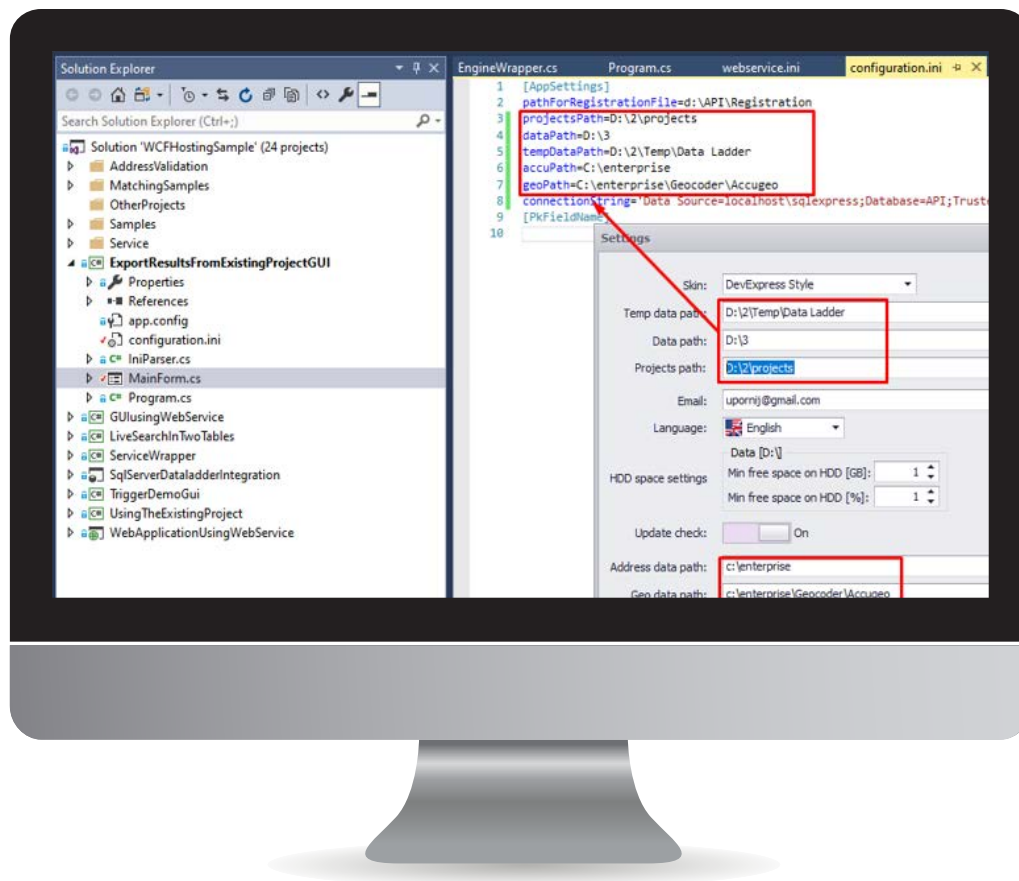


www.DataLadder.com

Export Results From Existing Project GUI

This example shows direct using of API. The Example executes selected project and saves results in the database.

Settings should be copied from Data Match Enterprise to "configuration.ini" file. Modify connection string to database as results are going to be saved.



Build this project and make sure that all DLLs from "D:\API\DLLs" are present in output directory. (bin\Debug or bin\Release).

Also output directory should contain configuration.ini file.

After starting the application please choose a project for executing.

The following information will display in the result window after running the application and opening some DME project



After running the application matched data will be exported to database defined by connection string in 'configuration.ini' file.

ABOUT US

Data Ladder is a data quality software company dedicated to helping business users get the most out of their data through data matching, profiling, deduplication, and enrichment tools. Whether it's matching millions of records through our fuzzy matching algorithms, or transforming complex product data through semantic technology, Data Ladder's data quality tools provide a superior level of service unmatched in the industry.

DataMatch Enterprise, was proven to find approximately 5-12% more matches than leading software companies IBM and SAS in 15 different studies.

- Unparalleled Matching Accuracy and Speed For Enterprise Level Data.
- Cleansing beating IBM and SAS.
- Proprietary Matching Algorithms with a high level of matching accuracy at blazing fast speeds on Desktop/Laptop Hardware.
- Big Data Capability with data sets up to 100 Million Records.
- Deduplication and Merge Purge within and across any number of files.
- Suppression of existing customers or Do Not Contact from marketing lists.
- Advanced record linking technology to create data warehouses.
- Quick Data Profile tool finds and fixes Data Quality issues within the first 5 minutes of setup to improve match quality.

Free Download